

Fitzrovia Collection

Influenced by Art Deco design, Fitzrovia is characterized by distinct stepped detailing and the perfect art of symmetry. Each of the five pieces include matching backplates, creating a striking silhouette when set in context. Luxury, sophistication, and functionality come together perfectly to form this statement collection that will elevate any space.





Fitzrovia Collection

Influenced by Art Deco design, Fitzrovia is characterized by distinct stepped detailing and the perfect art of symmetry. Each of the five pieces include matching backplates, creating a striking silhouette when set in context.

Made from Brass. Includes fixings.

FINISHES



DARK BRUSHED BRASS (DBB)



POLISHED NICKEL (PN)



82MM T BAR WITH BACKPLATE

CODE: **GFITK082**

FINISH CODE
DBB, PN

PROJECTION	OVERALL LENGTH	WIDTH X HEIGHT	BACKPLATE THICKNESS
34MM	82MM	20MM X 10MM	5MM



160MM PULL HANDLE WITH BACKPLATES

CODE: **GFITP160**

FINISH CODE
DBB, PN

HOLE CENTRES	PROJECTION	OVERALL LENGTH	WIDTH X HEIGHT	BACKPLATE THICKNESS
160MM	34MM	240MM	20MM X 10MM	5MM



320MM PULL HANDLE WITH BACKPLATES

CODE: **GFITP320**

FINISH CODE
DBB, PN

HOLE CENTRES	PROJECTION	OVERALL LENGTH	WIDTH X HEIGHT	BACKPLATE THICKNESS
320MM	34MM	400MM	20MM X 10MM	5MM



608MM PULL HANDLE WITH BACKPLATES

CODE: **GFITP608**

FINISH CODE
DBB, PN

HOLE CENTRES	PROJECTION	OVERALL LENGTH	WIDTH X HEIGHT	BACKPLATE THICKNESS
608MM	34MM	688MM	20MM X 10MM	5MM

34MM KNOB WITH BACKPLATE

CODE: **GFITK034**FINISH CODE
DBB, PN

PROJECTION	KNOB DIAMETER	BACKPLATE THICKNESS
34MM	34MM	5MM



Luxury, sophistication, and functionality come together perfectly to form this statement collection that will elevate any space.





35MM KNOB

CODE: **GBELK035**

FINISH CODE
SBL

PROJECTION	KNOB DIAMETER
38MM	35MM



82MM T-BAR KNOB

CODE: **GBELK082**

FINISH CODE
SBL

PROJECTION	OVERALL LENGTH	BAR THICKNESS
24MM	82MM	14MM



160MM PULL HANDLE

CODE: **GBELP160**

FINISH CODE
SBL

HOLE CENTRES	PROJECTION	OVERALL LENGTH	BAR THICKNESS
160MM	38MM	242MM	14MM



320MM PULL HANDLE

CODE: **GBELP320**

FINISH CODE
SBL

HOLE CENTRES	PROJECTION	OVERALL LENGTH	BAR THICKNESS
320MM	38MM	402MM	14MM

Belgravia Collection

Featuring striking knurled detailing and bold wrap around clasps, Belgravia has been designed and crafted to exacting standards. Made from Brass. Includes fixings.

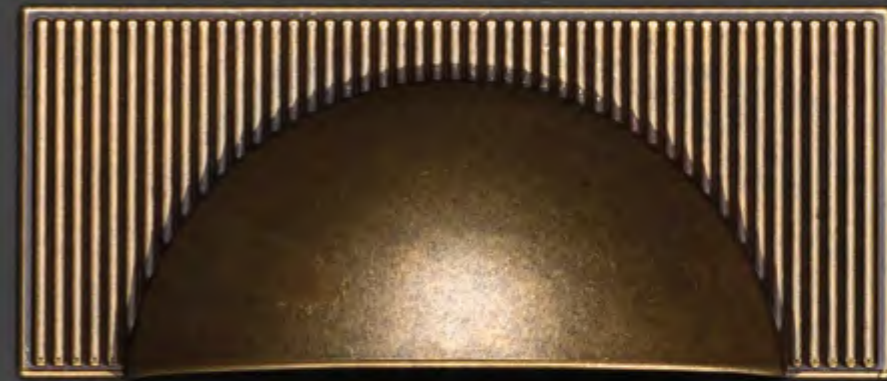
FINISHES



SATIN BRASS LACQUERED (SBL)

Barrington Collection

This signature collection features a striking ribbed texture, taking elements of inspiration from Art Deco design. With its bold industrial flair and fine details, the Barrington collection makes a statement.

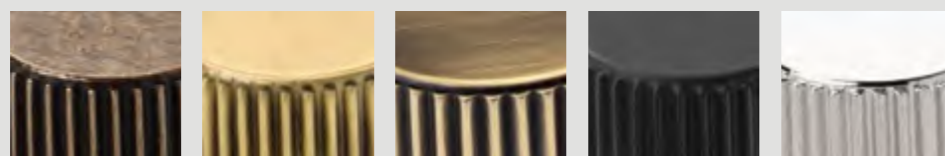




Barrington Collection

This signature collection features a striking ribbed texture, taking elements of inspiration from Art Deco design. With its bold industrial flair and fine details, the Barrington collection makes a statement.
Made from Zamac. Includes fixings.

FINISHES



BRONZE (BRO)

BRUSHED SATIN BRASS (BSB)

DARK BRUSHED BRASS (DBB)

MATT BLACK (MBL)

POLISHED NICKEL (PN)



32MM KNOB

CODE: **GBAK032**

FINISH CODE
BRO, BSB, DBB, MBL, PN

PROJECTION	KNOB DIAMETER
29MM	32MM



100MM BACKPLATE FOR KNOB

CODE: **GBABP100**

FINISH CODE
BRO, BSB, DBB, MBL, PN

OVERALL LENGTH	HEIGHT	BACKPLATE THICKNESS
100MM	25MM	4MM



160MM PULL HANDLE

CODE: **GBAP160**

FINISH CODE
BRO, BSB, DBB, MBL, PN

HOLE CENTRES	PROJECTION	OVERALL LENGTH	BAR THICKNESS
160MM	30MM	180MM	20MM X 9MM



160MM BACKPLATE FOR PULL HANDLE

CODE: **GU01BP160**

FINISH CODE
BRO, BSB, DBB, MBL, PN

HOLE CENTRES	OVERALL LENGTH	DEPTH	BACKPLATE THICKNESS
160MM	190MM	25MM	4MM

64MM CUP HANDLECODE: **GBAC064**FINISH CODE
BRO, BSB, DBB, MBL, PN

HOLE CENTRES	PROJECTION	OVERALL LENGTH	HEIGHT
64MM	24MM	105MM	45MM



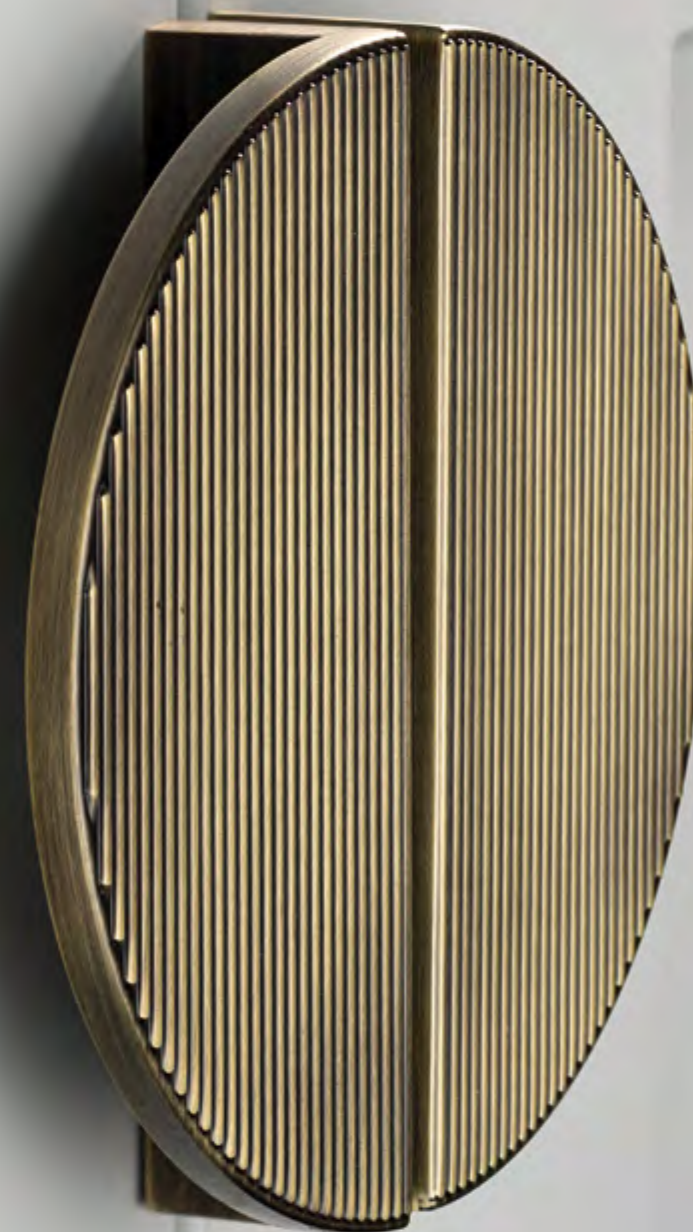
This signature collection features a striking ribbed texture, taking elements of inspiration from Art Deco design.

With its bold industrial flair and fine details, the Barrington collection makes a statement.



Barrington Eclipse Collection

A statement pull designed as part of the Barrington collection. The Eclipse can be used as a half-moon shape or when fitted side by side, to create a full moon. Combine the smooth and ribbed textures to make your own statement.





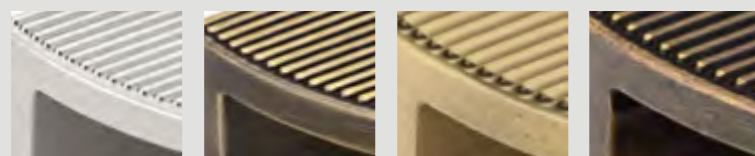
Barrington Eclipse Collection

A statement pull designed as part of the Barrington collection.

The Eclipse can be used as a stand-alone, half-moon shape or, when fitted side by side, a full moon. Mix and match the smooth and ribbed texture to create your own statement.

Made from Zamac. Includes fixings.

FINISHES



POLISHED NICKEL (PN)

DARK BRUSHED BRASS (DBB)

BRUSHED SATIN BRASS (BSB)

BRONZE (BRO)



64MM RIBBED PULL HANDLE

CODE: **GBETP064**

FINISH CODE
PN, DBB, BSB, BRO

HOLE CENTRES	PROJECTION	OVERALL LENGTH	HEIGHT
64MM	26MM	80MM	40MM



64MM SMOOTH PULL HANDLE

CODE: **GBEPP064**

FINISH CODE
PN, DBB, BSB, BRO

HOLE CENTRES	PROJECTION	OVERALL LENGTH	HEIGHT
64MM	26MM	80MM	40MM



96MM RIBBED PULL HANDLE

CODE: **GBETP096**

FINISH CODE
PN, DBB, BSB, BRO

HOLE CENTRES	PROJECTION	OVERALL LENGTH	HEIGHT
96MM	26MM	112MM	56MM



96MM SMOOTH PULL HANDLE

CODE: **GBEPP096**

FINISH CODE
PN, DBB, BSB, BRO

HOLE CENTRES	PROJECTION	OVERALL LENGTH	HEIGHT
96MM	26MM	112MM	56MM

Geddes Collection

Hand crafted and individually hammered, the organic texture of this collection creates stunning highlights and shadows to bring any piece of furniture to life. Designed to work seamlessly with both traditional and contemporary spaces, with each piece being unique, this collection promises to make a statement.



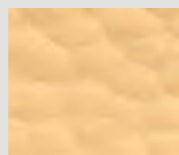


Geddes Collection

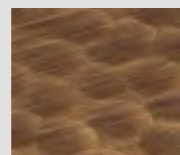
Hand crafted and individually hammered, the organic texture of this collection creates stunning highlights and shadows to bring any piece of furniture to life. Designed to work seamlessly with both traditional and contemporary spaces, with each piece being unique, this collection promises to make a statement.

Made from Brass. Includes fixings.

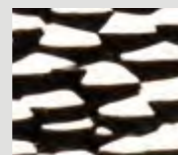
FINISHES



BRUSHED SATIN BRASS (BSB)



DARK BRUSHED BRASS (DBB)



POLISHED NICKEL (PN)



64MM PULL HANDLE

CODE: **GGEP064**

FINISH CODE
BSB, DBB, PN

HOLE CENTRES	PROJECTION	OVERALL LENGTH	HEIGHT
64MM	23MM	84MM	35MM



160MM PULL HANDLE

CODE: **GGEP160**

FINISH CODE
BSB, DBB, PN

HOLE CENTRES	PROJECTION	OVERALL LENGTH	HEIGHT
160MM	23MM	180MM	35MM



320MM PULL HANDLE

CODE: **GGEP320**

FINISH CODE
BSB, DBB, PN

HOLE CENTRES	PROJECTION	OVERALL LENGTH	HEIGHT
320MM	23MM	340MM	35MM

Pembrey Collection

This timeless collection features concentric detailing and a flared foot design perfectly suited to both slab and shaker cabinetry.





82MM T-BAR KNOB

CODE: **GPEK082**

FINISH CODE
BRO, MBL, DBB, PN

PROJECTION	OVERALL LENGTH	BAR THICKNESS
37MM	82MM	19MM



128MM BAR HANDLE

CODE: **GPEB128**

FINISH CODE
BRO, MBL, DBB, PN

HOLE CENTRES	PROJECTION	OVERALL LENGTH	BAR THICKNESS
128MM	37MM	210MM	12MM



320MM BAR HANDLE

CODE: **GPEB320**

FINISH CODE
BRO, MBL, DBB, PN

HOLE CENTRES	PROJECTION	OVERALL LENGTH	BAR THICKNESS
320MM	37MM	402MM	12MM

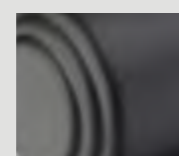
Pembrey Collection

This timeless collection features concentric detailing and a flared foot design, perfectly suited to both slab and shaker cabinetry. Made from Zamac. Includes fixings.

FINISHES



BRONZE (BRO)



MATT BLACK (MBL)



DARK BRUSHED BRASS (DBB)



POLISHED NICKEL (PN)



Ambrose Collection

Inspired by the contemporary bar and clasp design, the juxtaposition of the circular bar with accentuated grooves and rectangular posts, makes this an attractive all-round statement collection.
Made from Aluminium. Fixings sold separately.

FINISHES



ANTIQUE BRONZE
MATT (ABM)



60MM T-BAR KNOB

CODE: **GAMK060ABM**

FINISH CODE
ABM

PROJECTION	OVERALL LENGTH	BAR THICKNESS
35MM	60MM	12MM



160MM BAR HANDLE

CODE: **GAMB160ABM**

FINISH CODE
ABM

HOLE CENTRES	PROJECTION	OVERALL LENGTH	BAR THICKNESS
160MM	35MM	195MM	12MM



224MM BAR HANDLE

CODE: **GAMB224ABM**

FINISH CODE
ABM

HOLE CENTRES	PROJECTION	OVERALL LENGTH	BAR THICKNESS
224MM	35MM	260MM	12MM



COSMO 32MM KNOB

CODE: **GCOK032ABM**

FINISH CODE
ABM

PROJECTION	KNOB DIAMETER
30MM	32MM

Liberty Collection

This sleek, minimalist pull collection features an optional stepped backplate, and is available in 160mm and 320mm to suit a range of applications.

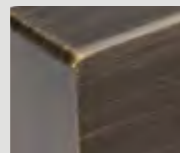




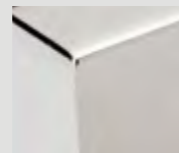
Liberty Collection

This sleek, minimalist pull collection features an optional stepped backplate, and is available in 160mm and 320mm to suit a range of applications. Made from Zamac. Includes fixings.

FINISHES



DARK BRUSHED BRASS (DBB)



POLISHED NICKEL (PN)



160MM PULL HANDLE

CODE: **GLIBD160**

FINISH CODE
DBB, PN

HOLE CENTRES	PROJECTION	OVERALL LENGTH	WIDTH X HEIGHT
160MM	29MM	172MM	12MM X 12MM



320MM PULL HANDLE

CODE: **GLIBD320**

FINISH CODE
DBB, PN

HOLE CENTRES	PROJECTION	OVERALL LENGTH	WIDTH X HEIGHT
320MM	29MM	332MM	12MM X 12MM



160MM BACKPLATE FOR PULL HANDLE

CODE: **GU01BP160**

FINISH CODE
DBB, PN

HOLE CENTRES	OVERALL LENGTH	HEIGHT	BACKPLATE THICKNESS
160MM	350MM	25MM	4MM



320MM BACKPLATE FOR PULL HANDLE

CODE: **GU02BP320**

FINISH CODE
DBB, PN

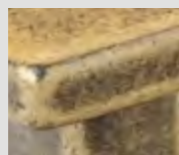
HOLE CENTRES	OVERALL LENGTH	HEIGHT	BACKPLATE THICKNESS
320MM	350MM	25MM	4MM



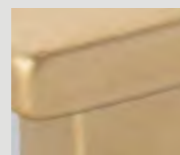
Otto Collection

With design cues referencing both traditional and contemporary styling, Otto works with slab and shaker doors. Its clean edges gives a nod to minimalistic, industrial design. Made from Zamac. Includes fixings.

FINISHES



ANTIQUE BRASS (AB)



BRUSHED SATIN BRASS (BSB)



MATT BLACK (MBL)



28MM KNOB

CODE: **GOTK028**

FINISH CODE
AB, BSB, MBL

PROJECTION	KNOB DIAMETER
28MM	28MM



96MM CUP HANDLE

CODE: **GOTC096**

FINISH CODE
AB, BSB, MBL

HOLE CENTRES	PROJECTION	OVERALL LENGTH	HEIGHT
96MM	22MM	133MM	25MM



160MM D HANDLE

CODE: **GOTD160**

FINISH CODE
AB, BSB, MBL

HOLE CENTRES	PROJECTION	OVERALL LENGTH	WIDTH X HEIGHT
160MM	29MM	175MM	9MM X 9MM



160MM D HANDLE

CODE: **GLUD160**

FINISH CODE
AB, AP, BSB

HOLE CENTRES	PROJECTION	OVERALL LENGTH	BAR THICKNESS
160MM	33MM	173MM	13MM



320MM D HANDLE

CODE: **GLUD320**

FINISH CODE
AB, AP, BSB

HOLE CENTRES	PROJECTION	OVERALL LENGTH	BAR THICKNESS
320MM	33MM	334MM	13MM

Lumi Collection

With its unique shape and clean, linear detailing, this collection personifies transitional. The design is perfectly proportioned and beautifully tactile. Made from Zamac. Includes fixings.

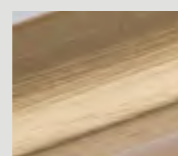
FINISHES



ANTIQUE BRASS (AB)



ANTIQUE PEWTER (AP)



BRUSHED SATIN BRASS (BSB)

With its unique shape and clean, linear detailing, this collection personifies transitional.



Casper Collection

The soft triangular curved bar gives this range a unique shape and timeless feel as it merges with the delicate up and over clasp from the foot.
Made from Aluminium. Fixings sold separately.

FINISHES



POLISHED NICKEL (PN)



60MM T-BAR KNOB

CODE: **GCAK060PN**

FINISH CODE
PN

PROJECTION	OVERALL LENGTH	BAR THICKNESS
37MM	60MM	14MM



128MM BAR HANDLE

CODE: **GCAB128PN**

FINISH CODE
PN

HOLE CENTRES	PROJECTION	OVERALL LENGTH	BAR THICKNESS
128MM	37MM	168MM	14MM



192MM BAR HANDLE

CODE: **GCAB192PN**

FINISH CODE
PN

HOLE CENTRES	PROJECTION	OVERALL LENGTH	BAR THICKNESS
192MM	37MM	232MM	14MM



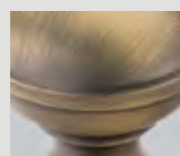
Traditional



Callcott Collection

Quintessentially British, this heritage collection personifies Hendel & Hendel's philosophy of dedicated design and craftsmanship. Hand finished, the cup and knob combination incorporates defining stepped details on the back plate to add a unique touch.
 Made from Brass. Includes fixings.

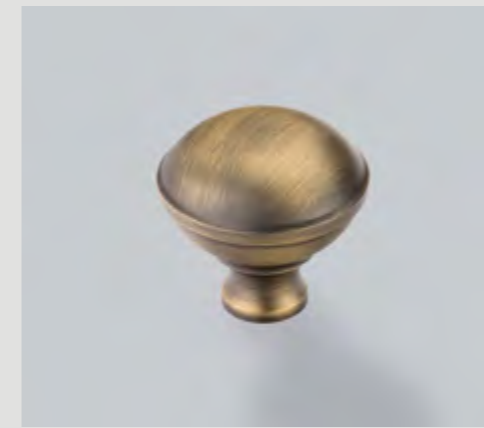
FINISHES



DARK BRUSHED BRASS (DBB)



POLISHED NICKEL (PN)



34MM KNOB

CODE: **GCALC034**

FINISH CODE
DBB, PN

PROJECTION	KNOB DIAMETER
33MM	34MM



38MM SQUARE BACKPLATE

CODE: **GCALBP038**

FINISH CODE
DBB, PN

HOLE CENTRES	OVERALL LENGTH	HEIGHT	BACKPLATE THICKNESS
64MM	38MM	38MM	4MM



76MM RECTANGLE BACKPLATE

CODE: **GCALBP076**

FINISH CODE
DBB, PN

HOLE CENTRES	OVERALL LENGTH	HEIGHT	BACKPLATE THICKNESS
64MM	76MM	38MM	4MM



64MM CUP HANDLE

CODE: **GCALC064**

FINISH CODE
DBB, PN

HOLE CENTRES	PROJECTION	OVERALL LENGTH	HEIGHT
64MM	21MM	92MM	40MM

128MM CUP HANDLE

CODE: **GCALC128**

FINISH CODE
DBB, PN

HOLE CENTRES	PROJECTION	OVERALL LENGTH	HEIGHT
128MM	21MM	156MM	40MM

192MM CUP HANDLE

CODE: **GCALC192**

FINISH CODE
DBB, PN

HOLE CENTRES	PROJECTION	OVERALL LENGTH	HEIGHT
192MM	21MM	220MM	40MM



Hampton Collection

A heritage design classic, the collection works effortlessly with shaker cabinetry.





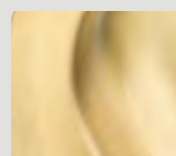
Hampton Collection

A heritage design classic, the collection works effortlessly with shaker cabinetry. Choose from one in five finishes including timeless Bronze. Made from Zamac. Includes fixings.

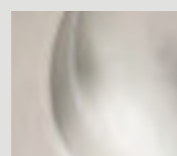
FINISHES



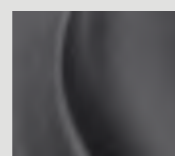
BRONZE (BRO)



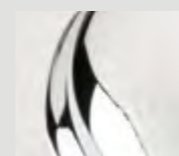
BRUSHED SATIN BRASS (BSB)



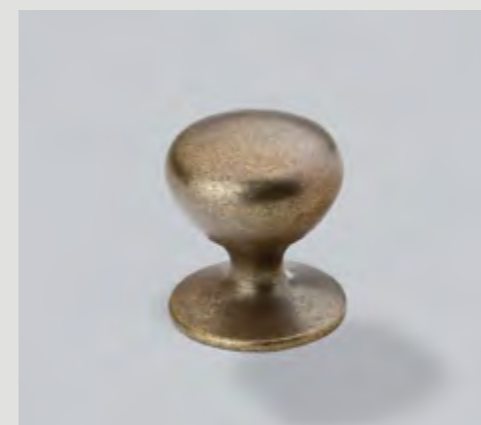
DULL NICKEL (DN)



MATT BLACK (MBL)



POLISHED NICKEL (PN)



32MM KNOB

CODE: **GHAK032**

FINISH CODE
BRO, BSB, DN, MBL, PN

PROJECTION	KNOB DIAMETER
37MM	32MM



96MM CUP HANDLE

CODE: **GHAC096**

FINISH CODE
BRO, BSB, DN, MBL, PN

HOLE CENTRES	PROJECTION	OVERALL LENGTH	HEIGHT
96MM	23MM	122MM	39MM



160MM CUP HANDLE

CODE: **GHAC160**

FINISH CODE
BRO, BSB, DN, MBL, PN

HOLE CENTRES	PROJECTION	OVERALL LENGTH	HEIGHT
160MM	24MM	195MM	42MM



160MM D HANDLE

CODE: **GHAD160**

FINISH CODE
BRO, BSB, DN, MBL, PN

HOLE CENTRES	PROJECTION	OVERALL LENGTH	WIDTH X HEIGHT
160MM	27MM	167MM	17MM X 5MM

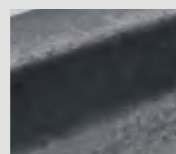
Jago Collection

Designed to elevate traditional spaces, with its soft undulating lines and considered form. Made from Zamac. Includes fixings.

FINISHES



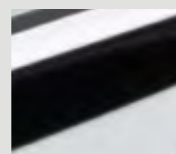
ANTIQUE BRASS (AB)



ANTIQUE PEWTER (AP)



BRUSHED SATIN BRASS (BSB)



CHROME PLATED (CP)



160MM D HANDLE

CODE: **GJAD160**

FINISH CODE
AB, AP, BSB, CP

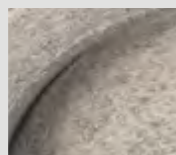
HOLE CENTRES	PROJECTION	OVERALL LENGTH	WIDTH X HEIGHT
160MM	33MM	175MM	11MM X 12MM



Trafalgar Collection

A design classic, featuring a bow, cup and knob in three timeless finishes.
Made from Zamac. Includes fixings.

FINISHES



ANTIQUE PEWTER (AP)



BRONZE (BRO)



POLISHED NICKEL (PN)



38MM KNOB

CODE: **GTRK038**

FINISH CODE
AP, BRO, PN

PROJECTION	KNOB DIAMETER
37MM	38MM



64MM CUP HANDLE

CODE: **GTRC064**

FINISH CODE
AP, BRO, PN

HOLE CENTRES	PROJECTION	OVERALL LENGTH	HEIGHT
64MM	29MM	102MM	47MM



96MM BOW HANDLE

CODE: **GTRB096**

FINISH CODE
AP, BRO, PN

HOLE CENTRES	PROJECTION	OVERALL LENGTH	WIDTH X HEIGHT
96MM	27MM	142MM	18MM X 6MM

Finsbury Collection

Designed to captivate, this majestic collection features a detailed linear bar, finial ends and fluted posts. The combination of a gold hue and brown patina creates an opulent antique brass finish.





78MM T-BAR KNOB

CODE: **GFIK078AB**

FINISH CODE
AB

PROJECTION	OVERALL LENGTH	BAR THICKNESS
40MM	78MM	14MM



160MM BAR HANDLE

CODE: **GFIB160AB**

FINISH CODE
AB

HOLE CENTRES	PROJECTION	OVERALL LENGTH	BAR THICKNESS
160MM	40MM	238MM	14MM



448MM BAR HANDLE

CODE: **GFIB448AB**

FINISH CODE
AB

HOLE CENTRES	PROJECTION	OVERALL LENGTH	BAR THICKNESS
448MM	40MM	526MM	14MM

Finsbury Collection

Designed to captivate, this majestic collection features a detailed linear bar, finial ends and fluted posts. The combination of a gold hue and brown patina creates an opulent antique brass finish.

Made from Brass. Includes fixings.

FINISHES



ANTIQUE
BRASS (AB)



32MM KNOB

CODE: **GFLK032**

FINISH CODE
BSB, PN

PROJECTION	KNOB DIAMETER
34MM	32MM



96MM CUP HANDLE

CODE: **GFLC096**

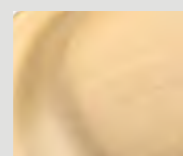
FINISH CODE
BSB, PN

HOLE CENTRES	PROJECTION	OVERALL LENGTH	HEIGHT
96MM	19MM	139MM	31MM

Fleur Collection

This beautiful two-piece collection features elegant soft lines and works perfectly on shaker cabinetry. Made from Brass. Includes fixings.

FINISHES



BRUSHED SATIN
BRASS (BSB)



POLISHED
NICKEL (PN)

A tasteful addition to any home.
The refined geometry of
the Fleur collection will elevate
traditional cabinetry.



30MM KNOB

CODE: **GCHK030**

FINISH CODE
BN, CP

PROJECTION	KNOB DIAMETER
27MM	30MM



76MM CUP HANDLE

CODE: **GCHC076**

FINISH CODE
BN, CP

HOLE CENTRES	PROJECTION	OVERALL LENGTH	OVERALL HEIGHT
76MM	29MM	106MM	41MM



COCO 38MM KNOB

CODE: **GCOK038**

FINISH CODE
BN, CP

PROJECTION	KNOB DIAMETER
26MM	38MM

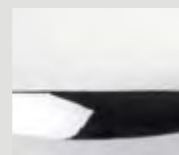
Charlbury Collection

An established design, the cup fits flush onto the cabinetry for ease of fitting. Paired with two knob options for design flexibility.
Made from Zamac. Includes fixings.

FINISHES



BRUSHED
NICKEL (BN)



CHROME
PLATED (CP)



31MM KNOB

CODE: **GHEK031**

FINISH CODE
AB, MBL

PROJECTION	KNOB DIAMETER
22MM	31MM



128MM BAR HANDLE

CODE: **GHEB128**

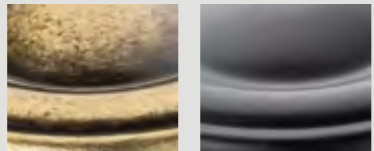
FINISH CODE
AB, MBL

HOLE CENTRES	PROJECTION	OVERALL LENGTH	BAR THICKNESS
128MM	32MM	143MM	14MM

Hebe Collection

With its concentric detailing and traditional design cues, Hebe suits shaker cabinetry perfectly. Made from Zamac. Includes fixings.

FINISHES



ANTIQU
BRASS (AB)

MATT BLACK
(MBL)

The Hebe collection complements traditional design aesthetics with its refined detailing and timeless finishes.

Contemporary

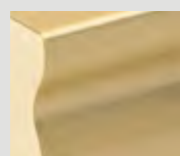




Jura Collection

Clean lines and a unique indent feature make this collection both refined and functional.
Made from Aluminium. Includes fixings.

FINISHES



BRUSHED SATIN BRASS (BSB)



POLISHED NICKEL (PN)



32MM PROFILE HANDLE

CODE: **GJUP032**

FINISH CODE
BSB, PN

HOLE CENTRES	PROJECTION	OVERALL LENGTH	BAR THICKNESS
32MM	23MM	46MM	10MM



160MM PROFILE HANDLE

CODE: **GJUP160**

FINISH CODE
BSB, PN

HOLE CENTRES	PROJECTION	OVERALL LENGTH	BAR THICKNESS
160MM	23MM	174MM	10MM



320MM PROFILE HANDLE

CODE: **GJUP320**

FINISH CODE
BSB, PN

HOLE CENTRES	PROJECTION	OVERALL LENGTH	BAR THICKNESS
320MM	23MM	334MM	10MM



576MM PROFILE HANDLE

CODE: **GJUP576**

FINISH CODE
BSB, PN

HOLE CENTRES	PROJECTION	OVERALL LENGTH	BAR THICKNESS
576MM	23MM	622MM	10MM

Reba Collection

Inspired by the power of nature's elements, this textured piece is wonderfully tactile, available in three exquisite finishes. Perfectly suited for contemporary furniture applications. Made from Zamac. Includes fixings.

FINISHES



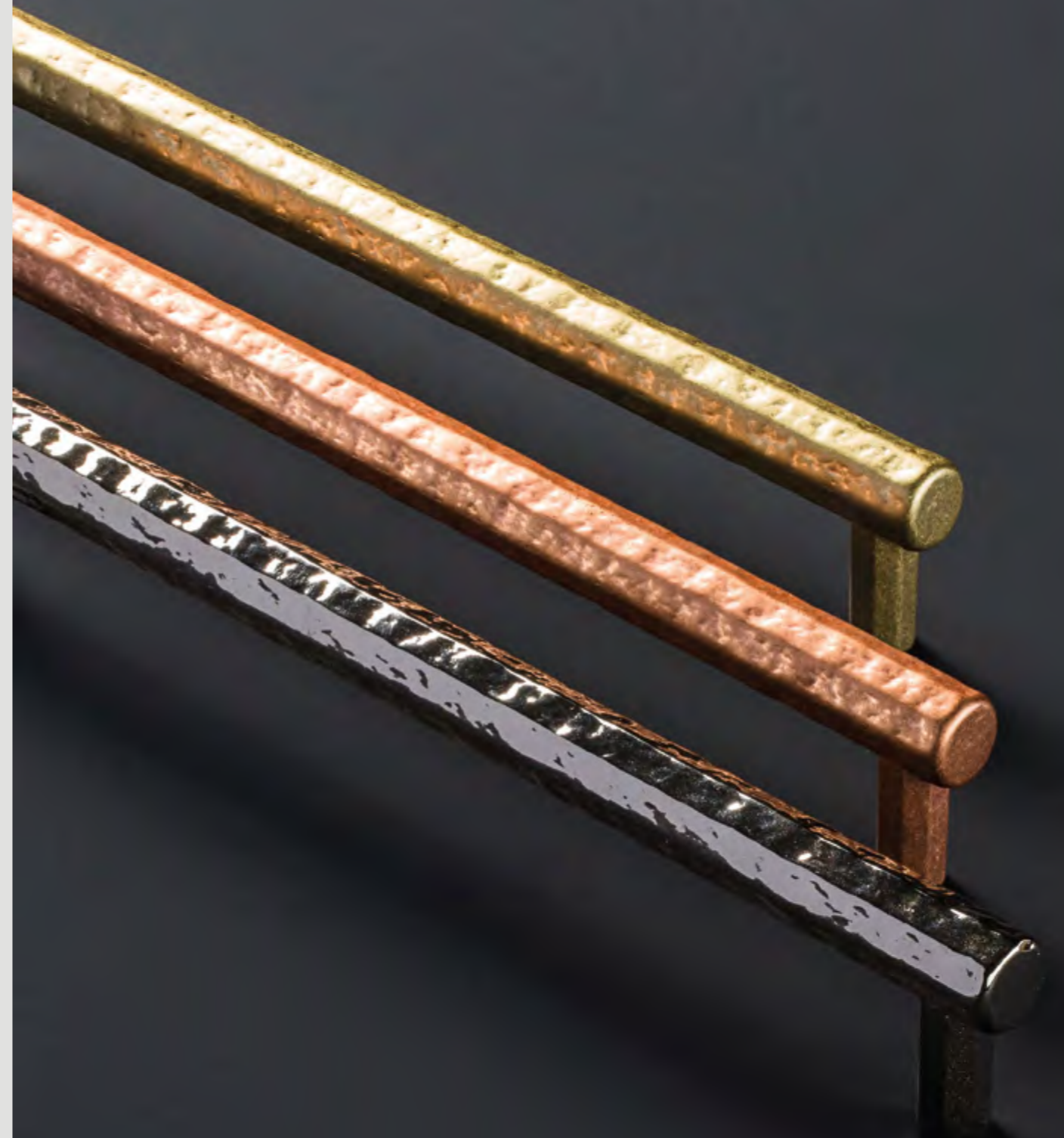
**POLISHED
NICKEL (PN)**



**SATIN BRASS
(SB)**



**SATIN COPPER
(SCO)**



192MM BAR HANDLE

CODE: **GREB192**

FINISH CODE
PN, SB, SCO

HOLE CENTRES	PROJECTION	OVERALL LENGTH	BAR THICKNESS
192MM	33MM	211MM	13MM



Edison Collection

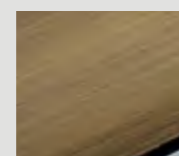
Clean, elegant and distinctive. This pull collection promises to add a soft, sleek accent to your modern interior. With its elegantly tapered edges, this design is beautifully balanced and works seamlessly on both slab and shaker style doors.

Made from Aluminium. Includes fixings.

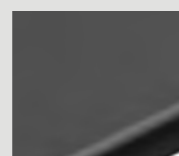
FINISHES



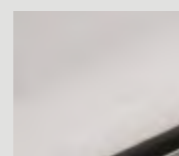
BRUSHED SATIN
BRASS (BSB)



DARK BRUSHED
BRASS (DBB)



MATT BLACK
(MBL)



POLISHED
NICKEL (PN)



64MM PROFILE HANDLE

CODE: **GEDP064**

FINISH CODE
BSB, DBB, MBL, PN

HOLE CENTRES	PROJECTION	OVERALL LENGTH	HEIGHT
64MM	41MM	100MM	18MM



128MM PROFILE HANDLE

CODE: **GEDP128**

FINISH CODE
BSB, DBB, MBL, PN

HOLE CENTRES	PROJECTION	OVERALL LENGTH	HEIGHT
128MM	41MM	200MM	18MM



256MM PROFILE HANDLE

CODE: **GEDP256**

FINISH CODE
BSB, DBB, MBL, PN

HOLE CENTRES	PROJECTION	OVERALL LENGTH	HEIGHT
256MM	41MM	351MM	18MM

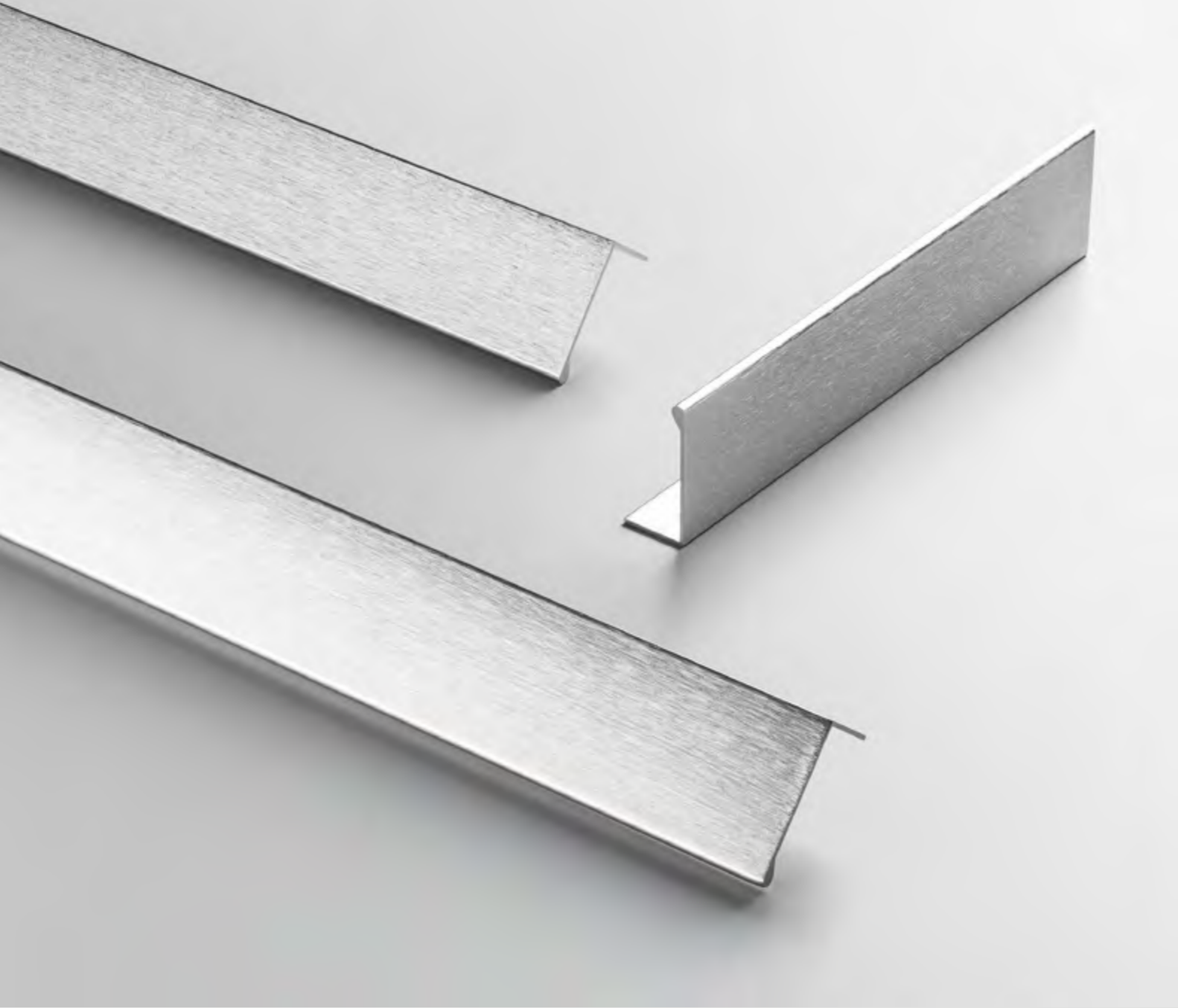


864MM PROFILE HANDLE

CODE: **GEDP864**

FINISH CODE
BSB, DBB, MBL, PN

HOLE CENTRES	PROJECTION	OVERALL LENGTH	HEIGHT
575MM	41MM	900MM	18MM



Lincoln Collection

A minimalist, wrap around profile handle collection. Lincoln is designed for contemporary spaces. Made from Aluminium. Includes fixings.

FINISHES



BRUSHED NICKEL (BN)



BRUSHED SATIN BRASS (BSB)



MATT BLACK (MBL)



128MM PROFILE HANDLE

CODE: **GLIP128**

FINISH CODE
BN, BSB, MBL

HOLE CENTRES	PROJECTION	OVERALL LENGTH	HEIGHT
128MM	43MM	200MM	20MM



192MM PROFILE HANDLE

CODE: **GLIP192**

FINISH CODE
BN, BSB, MBL

HOLE CENTRES	PROJECTION	OVERALL LENGTH	HEIGHT
192MM	43MM	250MM	20MM



768MM PROFILE HANDLE

CODE: **GLIP768**

FINISH CODE
BN, BSB, MBL

HOLE CENTRES	PROJECTION	OVERALL LENGTH	HEIGHT
768MM	43MM	800MM	20MM

Kellas Collection

Achieving the perfect balance of design and functionality, Kellas suits a wide range of design applications. The knurled texture adds a refined tactile feel to the design.

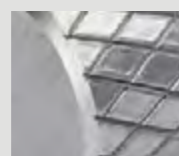




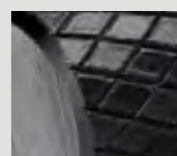
Kellas Collection

Achieving the perfect balance of design and functionality, Kellas suits a wide range of design applications. The knurled texture adds a refined tactile feel to the design.
Made from Aluminium. Includes fixings.

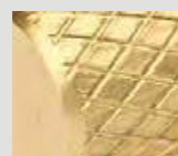
FINISHES



BRUSHED ANODISED (BA)



MATT BLACK (MBL)



SATIN BRASS (SB)



60MM T-BAR KNOB

CODE: **GKEK060**

FINISH CODE
BA, MBL, SB

PROJECTION	OVERALL LENGTH	BAR THICKNESS
33MM	60MM	10MM



160MM BAR HANDLE

CODE: **GKEB160**

FINISH CODE
BA, MBL, SB

HOLE CENTRES	PROJECTION	OVERALL LENGTH	BAR THICKNESS
160MM	33MM	168MM	10MM



256MM BAR HANDLE

CODE: **GKEB256**

FINISH CODE
BA, MBL, SB

HOLE CENTRES	PROJECTION	OVERALL LENGTH	BAR THICKNESS
256MM	33MM	265MM	10MM



768MM BAR HANDLE

CODE: **GKEB768**

FINISH CODE
BA, MBL, SB

HOLE CENTRES	PROJECTION	OVERALL LENGTH	BAR THICKNESS
768MM	33MM	776MM	10MM



160MM D HANDLE

CODE: **GMID160**

FINISH CODE
BN, BSB, CP, MBC, MBL

HOLE CENTRES	PROJECTION	OVERALL LENGTH	WIDTH X HEIGHT
160MM	28MM	169MM	9MM X 9MM



320MM D HANDLE

CODE: **GMID320**

FINISH CODE
BN, BSB, CP, MBL

HOLE CENTRES	PROJECTION	OVERALL LENGTH	WIDTH X HEIGHT
320MM	28MM	329MM	9MM X 9MM

Milano Collection

An understated, minimal design designed for contemporary spaces.
Made from Zamac. Includes fixings.

FINISHES



BRUSHED NICKEL (BN)

BRUSHED SATIN BRASS (BSB)

CHROME PLATED (CP)

MATT BRUSHED COPPER (MBC)

MATT BLACK (MBL)

A modernist classic, the Milano is a simple yet sophisticated way to lift any room.

Aubyn Collection

This striking collection combines a beautifully faceted knob with clean concave lines on the bar handle to deliver the perfect finishing touch to your application.
Made from Zamac. Includes fixings.

FINISHES



BRONZE
(BRO)



BRUSHED SATIN BRASS (BSB)



POLISHED NICKEL (PN)



35MM KNOB

CODE: **GAUK035**

FINISH CODE
BRO, BSB, PN

PROJECTION	KNOB DIAMETER
25MM	35MM



160MM PULL HANDLE

CODE: **GAUP160**

FINISH CODE
BRO, BSB, PN

HOLE CENTRES	PROJECTION	OVERALL LENGTH	BAR THICKNESS
160MM	39MM	218MM	18MM X 18MM





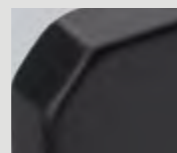
Campana Collection

Featuring angular chamfer detailing on the outside and inside ends, this contemporary collection is ideal for both kitchens and bedrooms with three size options.
 Made from Zamac. Includes fixings.

FINISHES



CHROME
PLATED (CP)



MATT BLACK
(MBL)



SATIN BRASS
(SB)



160MM D HANDLE

CODE: **GCAD160**

FINISH CODE
CP, MBL, SB

HOLE CENTRES	PROJECTION	OVERALL LENGTH	BAR THICKNESS
160MM	28MM	178MM	8.5MM X 7MM



192MM D HANDLE

CODE: **GCAD192**

FINISH CODE
CP, MBL, SB

HOLE CENTRES	PROJECTION	OVERALL LENGTH	BAR THICKNESS
320MM	28MM	210MM	8.5MM X 7MM



320MM D HANDLE

CODE: **GCAD320**

FINISH CODE
CP, MBL, SB

HOLE CENTRES	PROJECTION	OVERALL LENGTH	BAR THICKNESS
320MM	28MM	338MM	8.5MM X 7MM



32MM PULL HANDLE

CODE: **GLAP032**

FINISH CODE
CP, MBL, SB

HOLE CENTRES	PROJECTION	OVERALL LENGTH	HEIGHT
32MM	28MM	65MM	56MM

The Lago collection is a coming together of style and purpose.

Clean effortless lines that will compliment and not dominate a modern space and aesthetic.

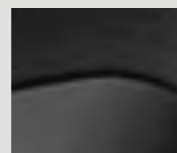
Lago Collection

With its distinctive form and functionally centric design, Lago promises to make a statement. Made from Zamac. Includes fixings.

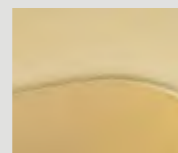
FINISHES



CHROME PLATED (CP)



MATT BLACK (MBL)



SATIN BRASS (SB)

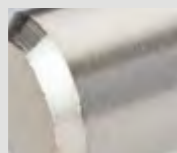


Coleby Collection

A recognised design, with additional finish options for design flexibility.

Made from Steel. Includes fixings.

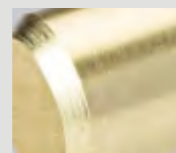
FINISHES



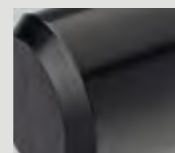
BRUSHED NICKEL (BN)



ANTIQUÉ COPPER (AC)



BRUSHED SATIN BRASS (BSB)



MATT BLACK (MBL)



96MM BAR HANDLE

CODE: **GCOB096**

FINISH CODE
BN

HOLE CENTRES	PROJECTION	OVERALL LENGTH	BAR THICKNESS
96MM	32MM	136MM	10MM



128MM BAR HANDLE

CODE: **GCOB128**

FINISH CODE
BN

HOLE CENTRES	PROJECTION	OVERALL LENGTH	BAR THICKNESS
128MM	32MM	168MM	10MM



160MM BAR HANDLE

CODE: **GCOB160**

FINISH CODE
AC, BN, BSB, MBL

HOLE CENTRES	PROJECTION	OVERALL LENGTH	BAR THICKNESS
160MM	32MM	230MM	10MM



256MM BAR HANDLE

CODE: **GCOB256**

FINISH CODE
BN

HOLE CENTRES	PROJECTION	OVERALL LENGTH	BAR THICKNESS
256MM	32MM	326MM	10MM



Hugo Collection

Ilsa Collection

The Hugo collection is a timeless range that will add that special touch to your room. Simple, sophisticated and refined. Made from Aluminium. Fixings sold separately.

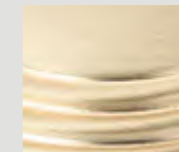
This Ilsa design features confident lines that will add that final flourish to your room. Made from Zamac. Includes fixings.

FINISHES

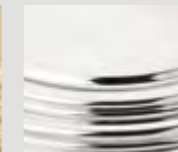


POLISHED NICKEL (PN)

FINISHES



BRUSHED SATIN BRASS (BSB)



POLISHED NICKEL (PN)

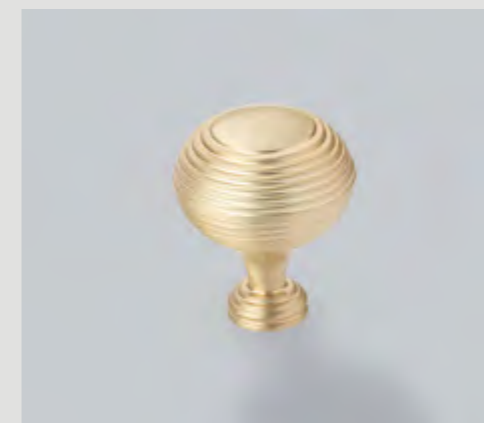


38MM KNOB

CODE: **GHUK038PN**

FINISH CODE
PN

PROJECTION	KNOB DIAMETER
36MM	38MM



38MM KNOB

CODE: **GILK038**

FINISH CODE
BSB, PN

PROJECTION	KNOB DIAMETER
45MM	38MM



Chelsea Collection

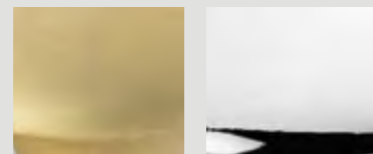
Ivo Collection

The Chelsea collection is a confident design that will compliment your chosen aesthetic. Made from Brass. Includes fixings.

A bold, yet elegant design, Ivo features circular detailing, well suited to traditional cabinetry. Made from Aluminium. Includes fixings.

FINISHES

FINISHES



BRUSHED SATIN BRASS (BSB) POLISHED NICKEL (PN)

BRONZE (BRO) BRUSHED SATIN BRASS (BSB) POLISHED NICKEL (PN)

38MM KNOB

45MM KNOB

CODE: **GCHK038**

CODE: **GIVK045**

FINISH CODE
BSB, PN

FINISH CODE
BRO, BSB, PN

PROJECTION KNOB DIAMETER
31MM 38MM

PROJECTION KNOB DIAMETER
32MM 45MM





Evora Collection

Refined and discreet, the Evora collection will add a touch of sophistication to a contemporary home. Made from Zamac. Includes fixings.

FINISHES



BRUSHED NICKEL (BN)

CHROME PLATED (CP)

SATIN BRASS (SB)

MATT BLACK (MBL)



24MM KNOB

CODE: **GEVK024**

FINISH CODE
BN, CP, SB, MBL

PROJECTION	KNOB DIAMETER
29MM	24MM

Kew Collection

Kew gives a contemporary aesthetic and functional form, the tactile finishing touch. Made from Brass. Includes fixings.

FINISHES



BRUSHED SATIN BRASS (BSB)

POLISHED NICKEL (PN)



38MM KNOB

CODE: **GKEK038**

FINISH CODE
BSB, PN

PROJECTION	KNOB DIAMETER
31MM	38MM